



TotalWall Fire Tested System

2-Hour Fire Tested as a Complete Wall System





4

LEADING BRANDS

2

HOUR THROUGH WALL FIRE PERFORMANCE

1

COMPLETE SYSTEM

(inside to out / outside to in)



System Overview

Introducing a unique, fully engineered, certified and tested system for the building envelope. The TotalWall Fire System has been created to provide a complete solution for specifiers, suitable for structural (load-bearing) and non-structural (infill) applications for a variety of markets.

Supplying all components in one system, from the internal plasterboard and steel frame to the façade finish and everything in between.

The system benefits from being the only 'Through Wall' system on the market to undergo a 2-hour fire test from inside to out/ outside to in, offering piece of mind to the specifier, client and occupants.

The steel frame and external wall system are approved by the 60-year BOPAS assurance scheme, which means the system has a minimum life expectancy of 60 years for durability and maintenance.

BOPAS

Buildoffsite Property
Assurance Scheme

System Benefits:

- ✓ Complete Through Wall System
- ✓ 2-hour Fire Tested (both ways)
- ✓ Aesthetics
- ✓ Premium Acoustic & Thermal Performance
- ✓ Structural Integrity (Strong)
- ✓ Reduced Carbon Footprint
- ✓ Durability

Specify TotalWall for:

- ✓ Multi Occupancy Buildings
- ✓ Modular/ Offsite
- ✓ Residential/ Domestic
- ✓ Roof Top Living
- ✓ Education and Healthcare Buildings
- ✓ Commercial Buildings





Working with Leading Brands

With extensive experience in creating the right façade solutions for your build, Wetherby is working with three other leading brands to deliver a unique full TotalWall* Fire Tested System.



Wetherby Building Systems Ltd
Wetherby Building Systems have been in the render industry for many years, offering fully certified insulated façade systems and finishes.

Kemwell
Specialists in Fire protection boards, systems and products for the construction, infrastructure, transport, energy, industrial and commercial sectors.

Frameclad
Frameclad design, manufacture and supply light gauge steel frame components, frames and structures for the construction industry.

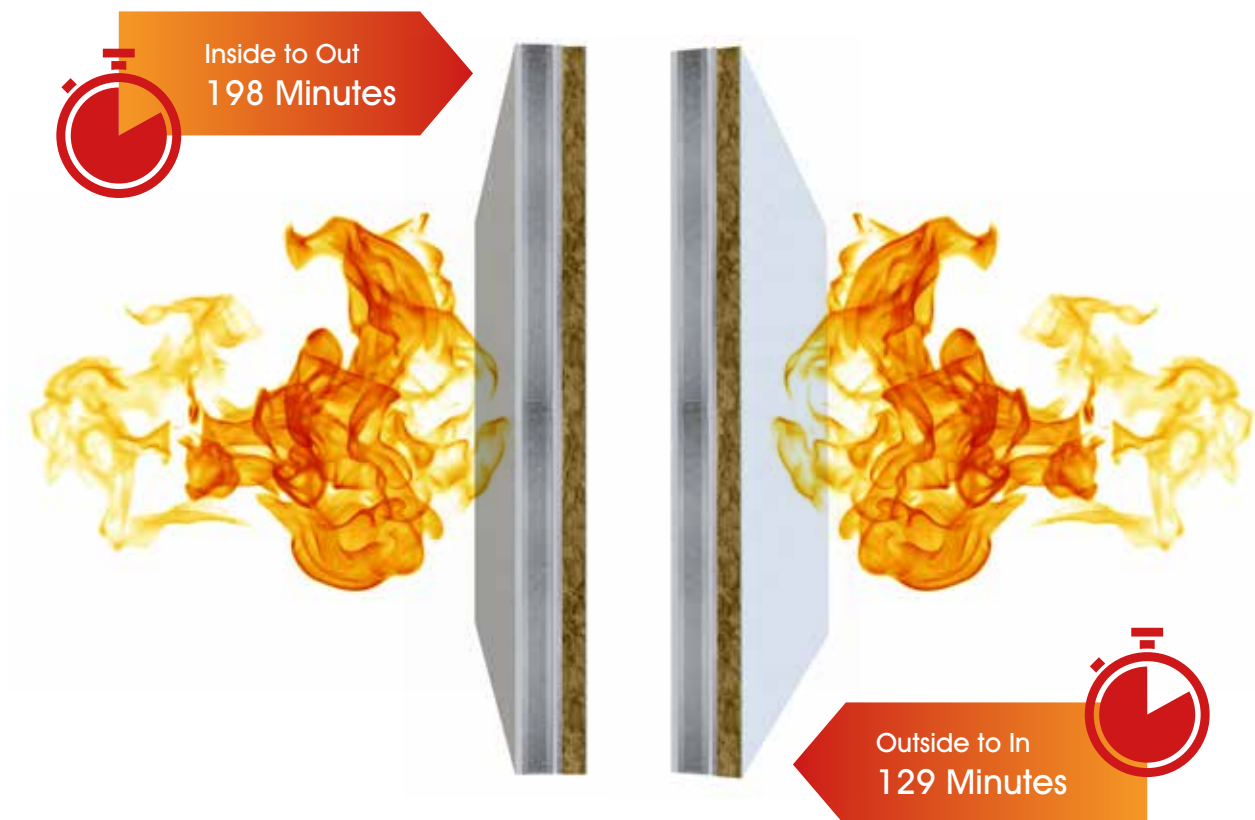
ROCKWOOL
ROCKWOOL Limited is the UK's leading manufacturer in sustainable non-combustible stone wool insulation.



Fire Performance

The TotalWall System has achieved a unique 2-hour structural fire test approval in accordance with BS EN 1365-1:2012. With temperatures in the furnace reaching over 1100°C, the system has been vigorously tested in both directions (inside to out & outside to in) to ensure the combined components from internal plasterboard to external render offer superior durability and fire performance.

The TotalWall System achieved;

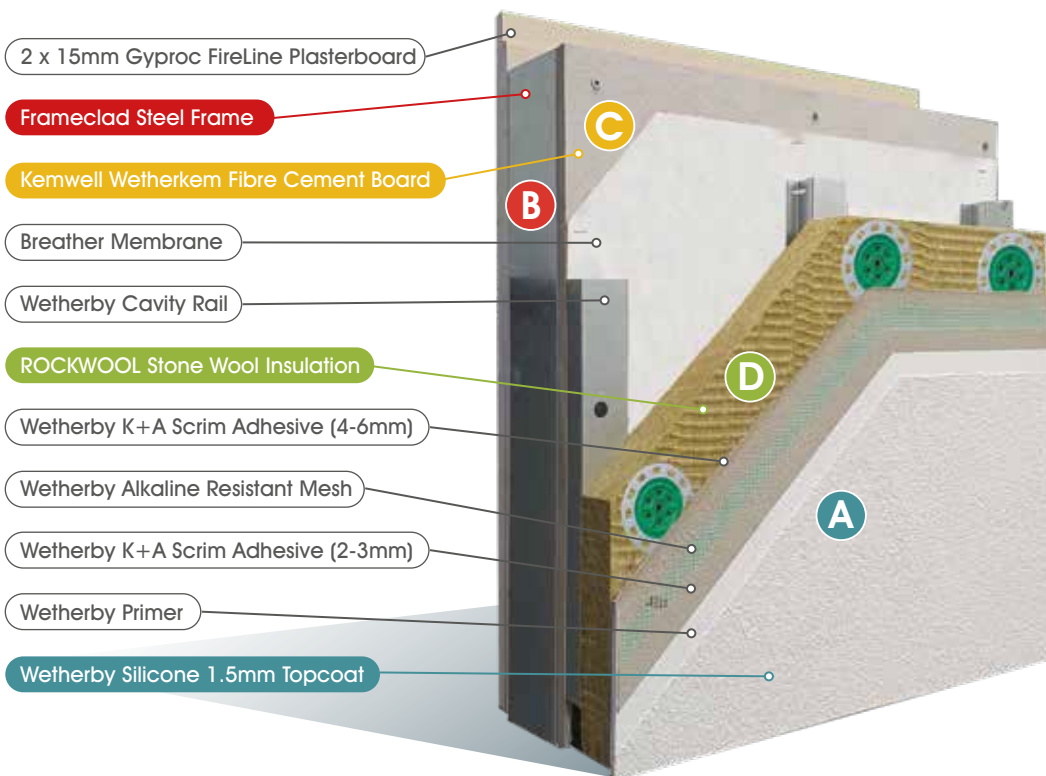


A minimal thickness of 40mm insulation was used externally, due to size limitations of the test rig. Increased thicknesses will only improve fire performance.



System Components

The TotalWall Fire Tested System has been created to help provide a fully engineered, certified and tested system for the building envelope. Supplying all components in one system, from the internal plasterboard to the external façade finish.



A

Wetherby Silicone Render Systems provide superb quality, ease of application and a superior colour range. The flexible anti-crack formulation and ultra-violet resistant pigments of a silicone or acrylic render allow for large areas to be seamlessly rendered with perfect colour consistency.

B

Frameclad design, engineer, manufacture and supply infill and load bearing solutions in light gauge steel frame. Suitable for all sectors from multi story, high occupancy projects to individual premises – there is a solution for all circumstances.

C

Kemwell WeatherKem Fibre Cement Board is an A1 non-combustible weatherproof building board for interior and exterior applications. It combines weather, moisture and fire resistance properties with high impact strength and sound insulation.

D

ROCKWOOL Stone Wool insulation is a semi-rigid insulation board that is A1 non-combustible and fire resistant, and will not develop any significant toxic smoke or promote flame spread, even when directly exposed to fire.

Accreditations & Approvals



BOPAS Accredited System



BBA Accredited System



Fully CE Marked



Warrington Fire



LSFA Association



SCI



BTC





Head Office

Wetherby Building Systems Limited
1 Kid Glove Road
Golborne Enterprise Park
Golborne
Greater Manchester
WA3 3GS

Technical Support: 0800 107 32 99
Samples: 0800 107 32 88
wbs-ltd.co.uk



Glasgow

62 Hydepark Street
Glasgow
Lanarkshire
G3 8BW
Tel: 0141 221 8115

Bridgend

Unit 17A
Brynmenyn Industrial Estate
Millers Avenue
Bridgend
CF32 9TD
Tel: 01656 720 422