



Through Coloured Render & Spar Dash Systems

Aftercare & Maintenance





General Maintenance & Cleaning of Wetherby Through Coloured Render & Spar Dash Systems

Addition of Metalwork

Any metalwork to be added to the building such as clothes lines, hooks, etc, should be well painted or otherwise protected if they are made from a ferrous metal. Attachment to the building should be made with fixings, which penetrate through the system and into the substrate, for example, sleeved bolts or extended length fixings. These should be sealed at their abutment with the system using a good quality silicone sealant.

Waste Pipes

Any additional waste pipes, etc, which penetrate the system should be passed through holes cut a maximum of $\frac{1}{4}$ " (6mm approx.) larger than the pipe diameter, which can then be sealed between pipe and system, using good quality silicone sealant.

Door Re-Decoration

Should paint stripping at doors or windows using a blow lamp or similar be carried out, then some protection of the adjacent system should be used to prevent discoloration of the surface and damage to the sealant at the junction of the system.



Aesthetic Additions

Carefully choose any further additions to the property that are to be added on after the insulation is complete, for example, canopies. Try to avoid types with; for example, stained mounting brackets, which are open to the weather. "Drain-off" from these types will stain lightly coloured finishes.



Replacement Of Existing Windows

Where doors or windows are to be replaced after application of the system, care must be taken not to damage the system in the reveals on removal or replacement and the new door/window should be resealed against the system using a good quality silicone sealant.

Addition of New Doors / Windows

Where new doors, windows or other openings are to be cut into the structure, the system must be layered back by 150mm per layer of material in the system away from the opening. New Wetherby materials should be applied in sequence neatly back to the new fitment or opening.

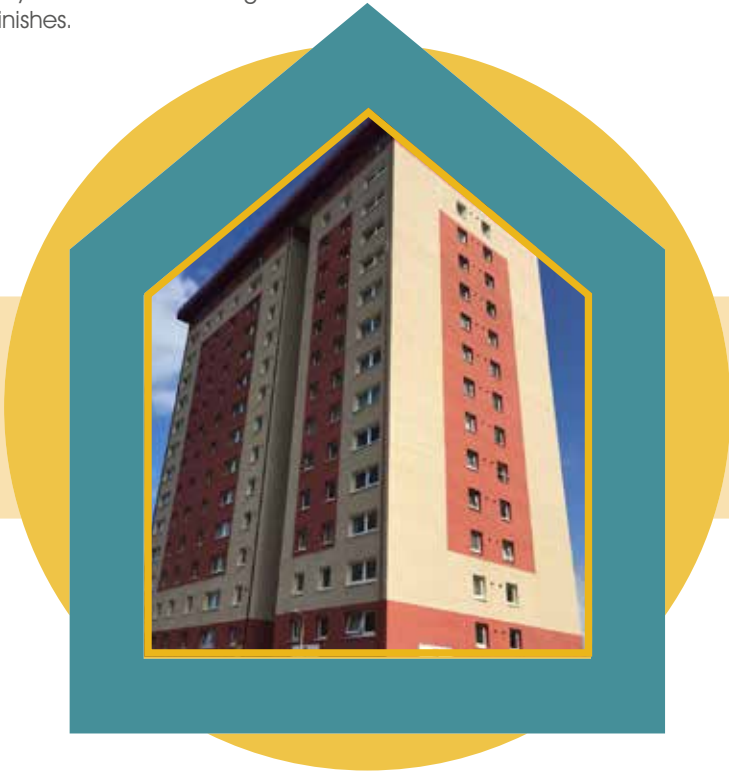


Garden & Plant Considerations

Keep garden soil levels as far below the system level as possible as soil splashing will soon discolour the base of the system.

Plants, trees and creepers can cause staining of lightly coloured finishes and care should therefore be taken in the positioning of them.

Climbing plants, provided they have a properly fixed trellis available for them will not cause any damage to the system. However, they may cause some staining of lightly coloured finishes.



Graffiti Removal

Keeping the dash free of graffiti can now be accomplished by the use of a range of pre-applied, breathable graffiti removing materials, which will not harm the brick or the joint.

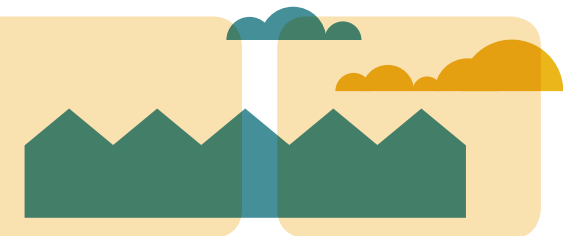
Such materials are readily available from most builders' merchants, and although they are not able to deter potential graffiti artists, it does enable such masonry to be cleaned down effectively.

Satellite Dish Installation

If fitting a satellite dish or receiver to a completed area of the external wall insulation system, either of the 2 methods outlined here should be adopted;

1. Drill out approximately sized holes through the system back to the wall surface and insert cylindrical non corrosive tension spacers at the relevant dish fixing points. The support bracket for the dish may then be installed as normal but should be tightened against the spacers and not the render system. Silicone sealant must be neatly applied around the spacers to ensure water penetration is prohibited.
2. Install Thermax insulation fixings through the EWI system into the main substrate as per manufacturer's instructions. Drill a suitably sized hole and clean out the hanger bolt and drill hole. Install the fixings ensuring the black thermal barrier is flush with the render. Screw in the Thermax fixing and seal, using silicone sealant. Mount the fixture and hand tighten the screw.

Please remember – All installations are best undertaken by professional tradesmen.



General Considerations

Do not lean metal objects against the system. Rust staining can soon disfigure the finishes, particularly lightly coloured ones.

Dripping overflows and splashes from leaking gutters and down-pipes can soon mark and spoil a new finish. Such leaks should be repaired as soon as possible.

Do not reverse vehicles up to walls with newly applied finishes on as exhaust emissions quickly leave unsightly black marks.

Care should be taken when handling heavy objects, for example dustbins, near the system. Although the system is resistant to damage, these types of objects particularly near corners can cause damage, which is visibly undesirable although easily repairable.

Cleaning the Dash System

Dry dash finishes are maintenance free under normal conditions. Deliberate or accidental contamination can be removed as follows.

Small Areas

Wash down with clean water using a stiff brush; work from the centre of the stain outwards to ensure the colour and finish is even and rinse well. Stubborn and penetrated stains including lime bloom should be treated with a mortar stain remover and washed down with clean water. The manufacturers instructions must be observed at all times.

Large Areas

Mechanical pressure washers can be used on large areas, these must be no more than 100bar pressure and the lance should be held with the tip no closer than 500mm.

Note. Tests to small areas must always be carried out to assess the suitability of any dash finish prior to commencement.



General Maintenance & Repair

Minor Aesthetically Damaged Areas

Carefully remove debris from the aggregate surface with a knife and wash down with a stiff brush and clean water. Fill any small holes with the same colour dash receiver and whilst still wet press in aggregate to match existing.

Large Aesthetically Damaged Areas

Carefully remove the damaged aggregate and dash receiver to expose a 150mm band of undamaged base coat and scrim around the impact area. Cut out and replace the damaged insulation board and re-fix as required. Apply base coat and scrim reinforcement over the insulation board lapping 75mm over the abutting undamaged areas and leave keyed. When set re-apply the dash receiver and aggregate to match existing finishes.





Should any further advice be required on any maintenance related topic, then this may be obtained from Wetherby Building Systems Limited.

Please remember - All repairs are best undertaken by professional tradesmen with experience of the materials and systems.

Wetherby Building Systems Limited will always advise of local companies with experience of our products and systems.

Workmanship that is poorly carried out will not only spoil the appearance of the products but may also adversely affect the life expectancy of the system and the product warranty.

Recipients of Wetherby products must take responsibility for existing laws and regulations and at all times operate within Health and Safety guidance on the use of these products.

The information provided within this page is deemed to be accurate to the best of our knowledge and given in good faith.





Head Office

Wetherby Building Systems Limited
1 Kid Glove Road
Golborne Enterprise Park
Golborne
Greater Manchester
WA3 3GS

Technical Support: 0800 107 32 99
Samples: 0800 107 32 88
wbs-ltd.co.uk



Glasgow

62 Hydepark Street
Glasgow
Lanarkshire
G3 8BW
Tel: 0141 221 8115

Bridgend

Unit 17A
Brynmenyn Industrial Estate
Millers Avenue
Bridgend
CF32 9TD
Tel: 01656 720 422