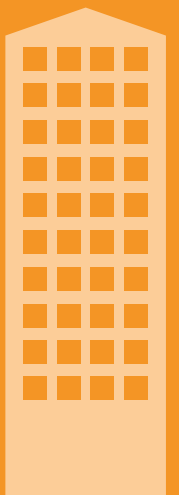
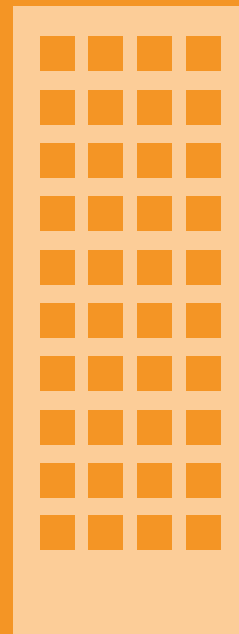


A1



Wetherby A1 System

The only non-combustible EWI system in Europe. First system certified A1.



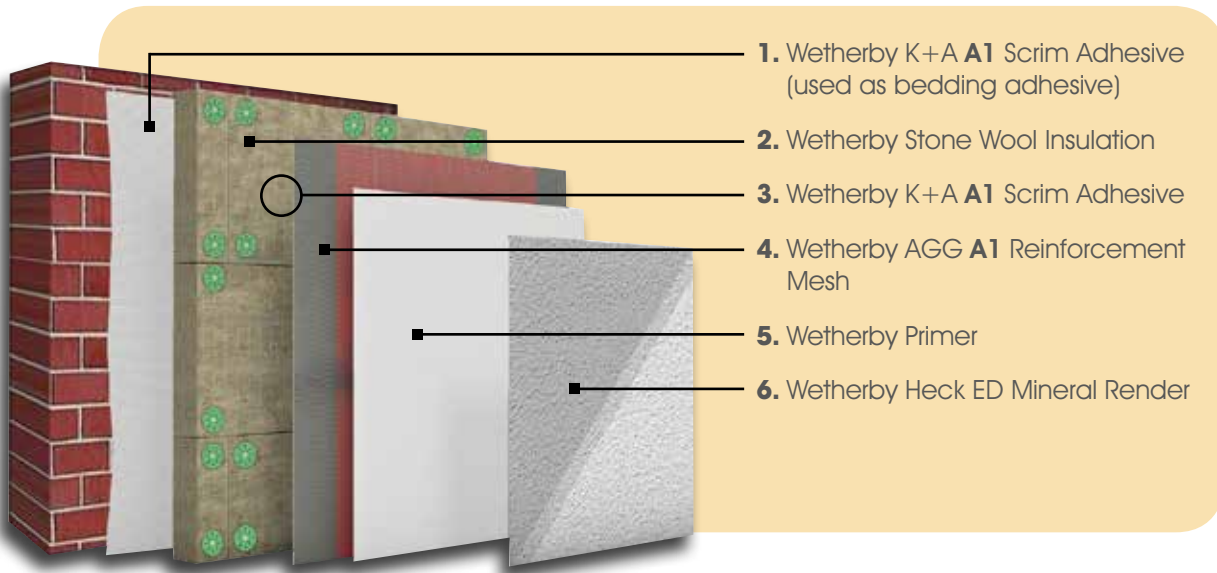


Wetherby A1 System

The first A1 certified non-combustible EWI system in Europe.

Wetherby are pleased to announce a breakthrough EWI system achieving an **A1 non-combustible** fire rating. This is the first A1 rated fireproof insulation solution to be launched in the UK for building facades, exclusively available from Wetherby.

The A1 System sets new standards in external wall insulation fire performance.

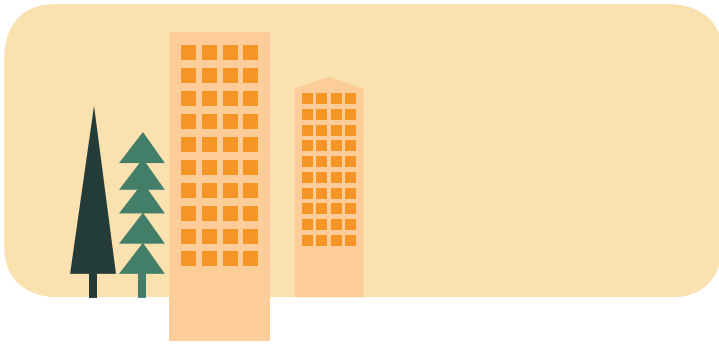


The vast majority of Mineral Wool EWI systems in the UK achieve an **A2 limited-combustible** fire rating. This new innovative A1 system comprises of non-combustible reinforcing mesh and basecoat to achieve the highest possible European fire classification to the BS EN 13501-1 standard.



The thermal benefit of the system is provided by the Wetherby A1 Stone Wool Insulation which is coated in the purely mineral Wetherby K&A A1 Scrim Adhesive. This is based predominantly on mineral and non-combustible raw material such as quartz, limestone, cement and lime, which ensures perfect adhesion between substrates and insulation board.

The system is finished with Wetherby Heck ED Mineral Render finishing coat, which is ideal for use with stone wool insulation, providing great breathability.

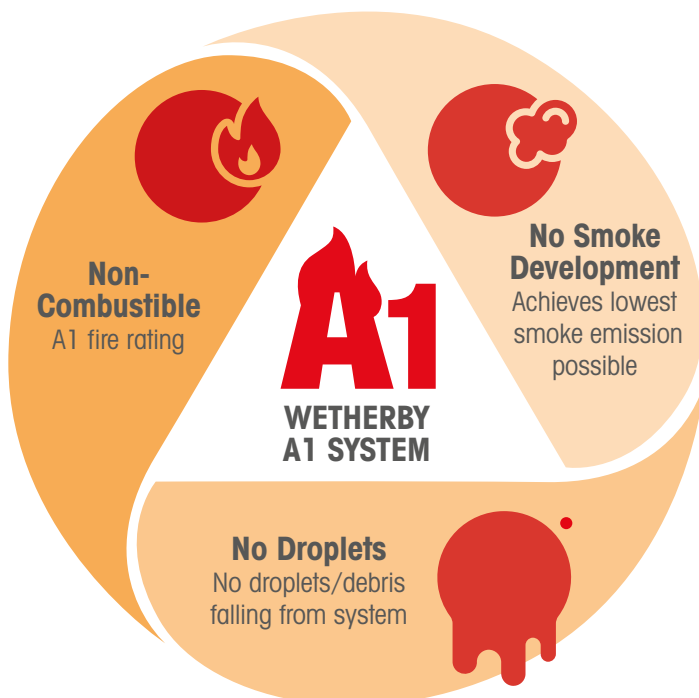


European Classification to BS EN 13501-1	National Classification (England, Wales and NI)	Building Regulations Risk Classification Scotland
A1	Non-Combustible	Non-Combustible
A2	Limited Combustibility	N/A
B -s3, d2 or Better	Class 0	Low
C -s3, d2 or Better	Class 1	Medium
D -s3, d2 or Better	Class 2 & 3	High
E -s3, d2 or Better	Class 4	Very High



To achieve an A1 rating, the system must be classified to BS EN 13501-1 using the following fire tests.

- EN 13823 SBI (Single Burning Item) – Used to determine the reaction to fire by exposing a flame to the system finish.
- BS EN ISO 1716:2010 – Bomb test. Each component of the system is 'blown up' to measure heat output (calorific value). All components must be A1.



For A1 building materials only, neither smoke development nor dripping behaviour is classified. A1 therefore means NO smoke and NO burning droplets or waste!

Call 01942 717100 for more information.



Head Office

Wetherby Building Systems Limited
1 Kid Glove Road
Golborne Enterprise Park
Golborne
Greater Manchester
WA3 3GS

Technical Support: 0800 107 32 99
Samples: 0800 107 32 88
wbs-ltd.co.uk



Glasgow

62 Hydepark Street
Glasgow
Lanarkshire
G3 8BW
Tel: 0141 221 8115

Bridgend

Unit 17A
Brynmenyn Industrial Estate
Millers Avenue
Bridgend
CF32 9TD
Tel: 01656 720 422